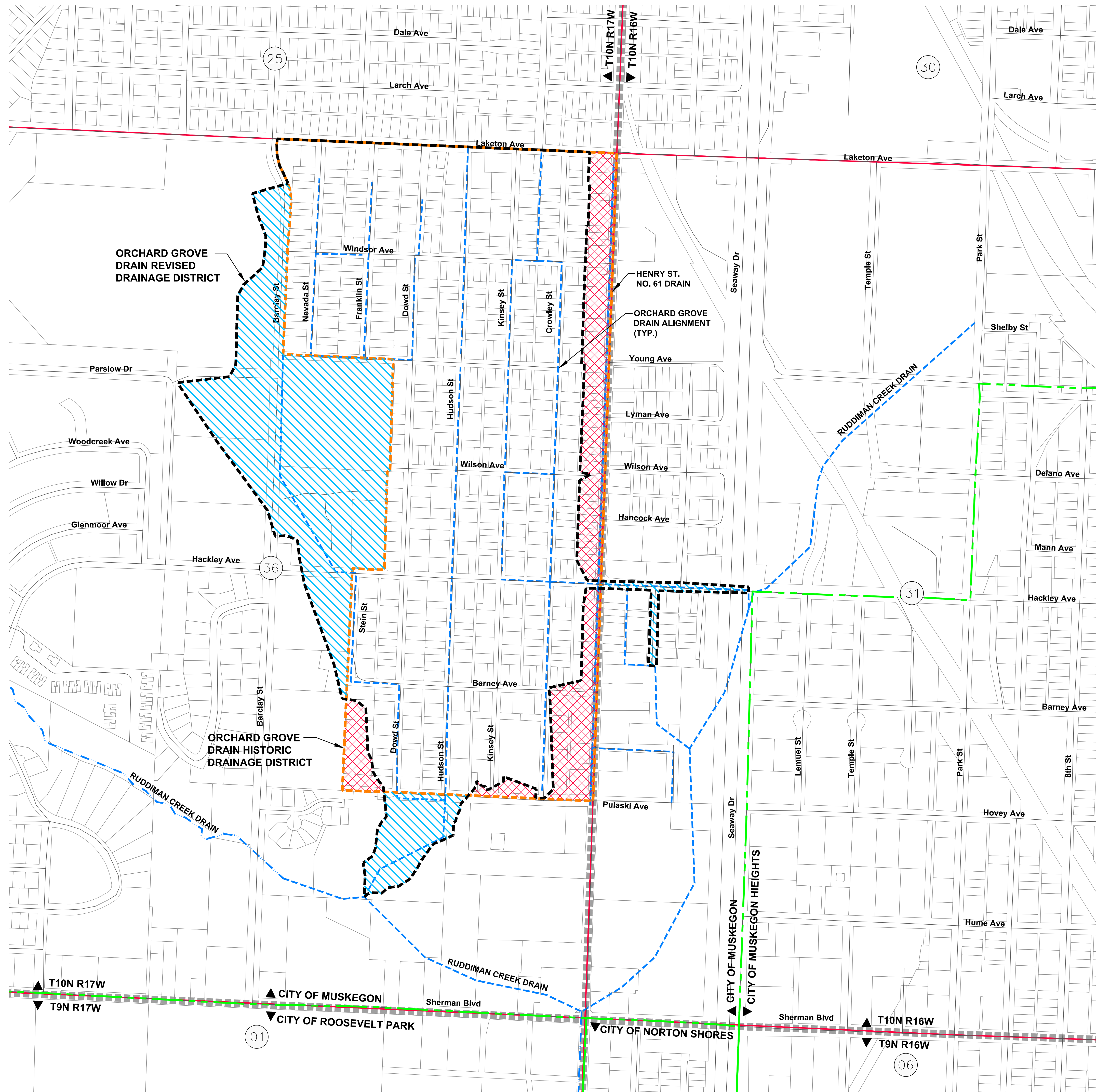


# ORCHARD GROVE DRAIN DRAINAGE DISTRICT

SECTION 31  
T10N, R16W  
&  
SECTION 36  
T10N R17W  
CITY OF MUSKOGON, MUSKOGON COUNTY

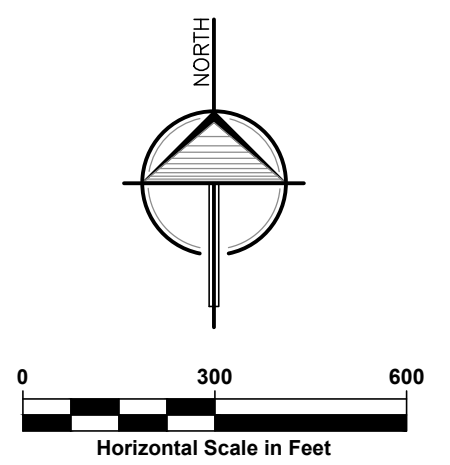


### DRAIN INFORMATION:

HISTORIC DISTRICT:	148.12 ACRES
REVISED DISTRICT:	173.49 ACRES
LANDS ADDED:	42.39 ACRES
LANDS REMOVED:	17.02 ACRES
<b>DRAIN LENGTH</b>	
ORCHARD GROVE DRAIN	4.04 MILES

### LEGEND

- LANDS REMOVED
- LANDS ADDED
- ENCLOSED DRAIN ALIGNMENT
- OPEN CHANNEL DRAIN ALIGNMENT
- HISTORIC DRAINAGE DISTRICT BOUNDARY
- REVISED DRAINAGE DISTRICT BOUNDARY
- PARCEL LINES
- CITY LIMITS
- SECTION LINES
- COUNTY LINE
- TOWNSHIP LINE
- SECTION NUMBERS



### LANDS ADDED/REMOVED MAP EXHIBIT B-1

<b>LRE</b> ENGINEERS & SURVEYORS	3800 W. River Dr. Ste. A Comstock Park MI 49321 ph. 616.301.7888 fax. 616.784.0737 www.LREmi.com	PROJECT#: 17-089.02
		DRAWN BY: NDJ
		DATE: 3/2019
		QA/QC: AWS

© 2019 LRE Engineering & Surveyors. All rights reserved. This document is the property of LRE Engineering & Surveyors. No part of this document may be reproduced without the written permission of LRE Engineering & Surveyors.