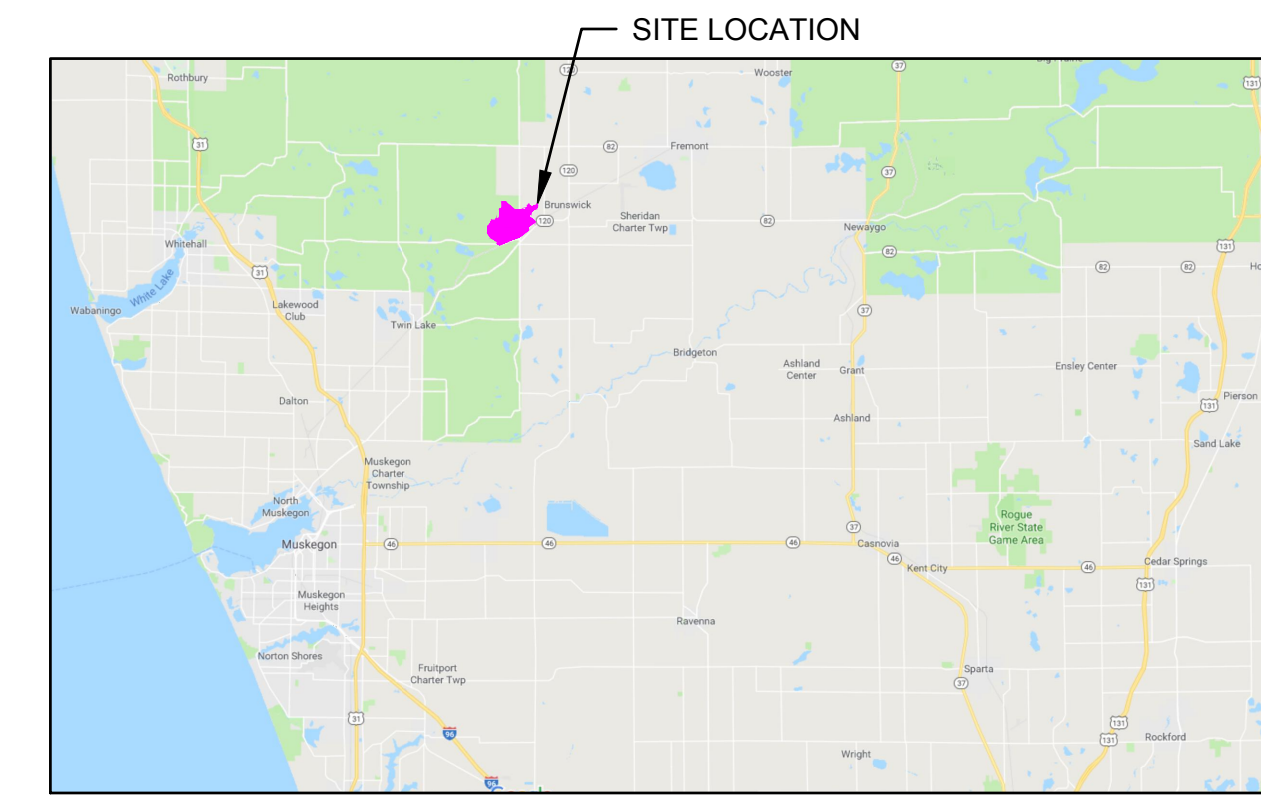


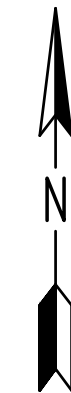


BRENDA M. MOORE
MUSKEGON COUNTY DRAIN COMMISSIONER
STEPHANIE BARRETT, DEPUTY DRAIN COMMISSIONER
MARTIN DRAIN DRAINAGE DISTRICT

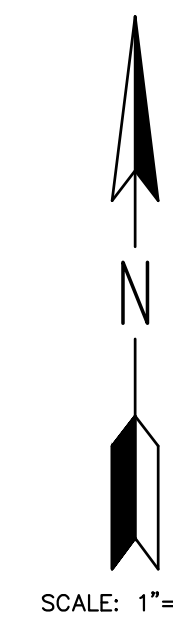
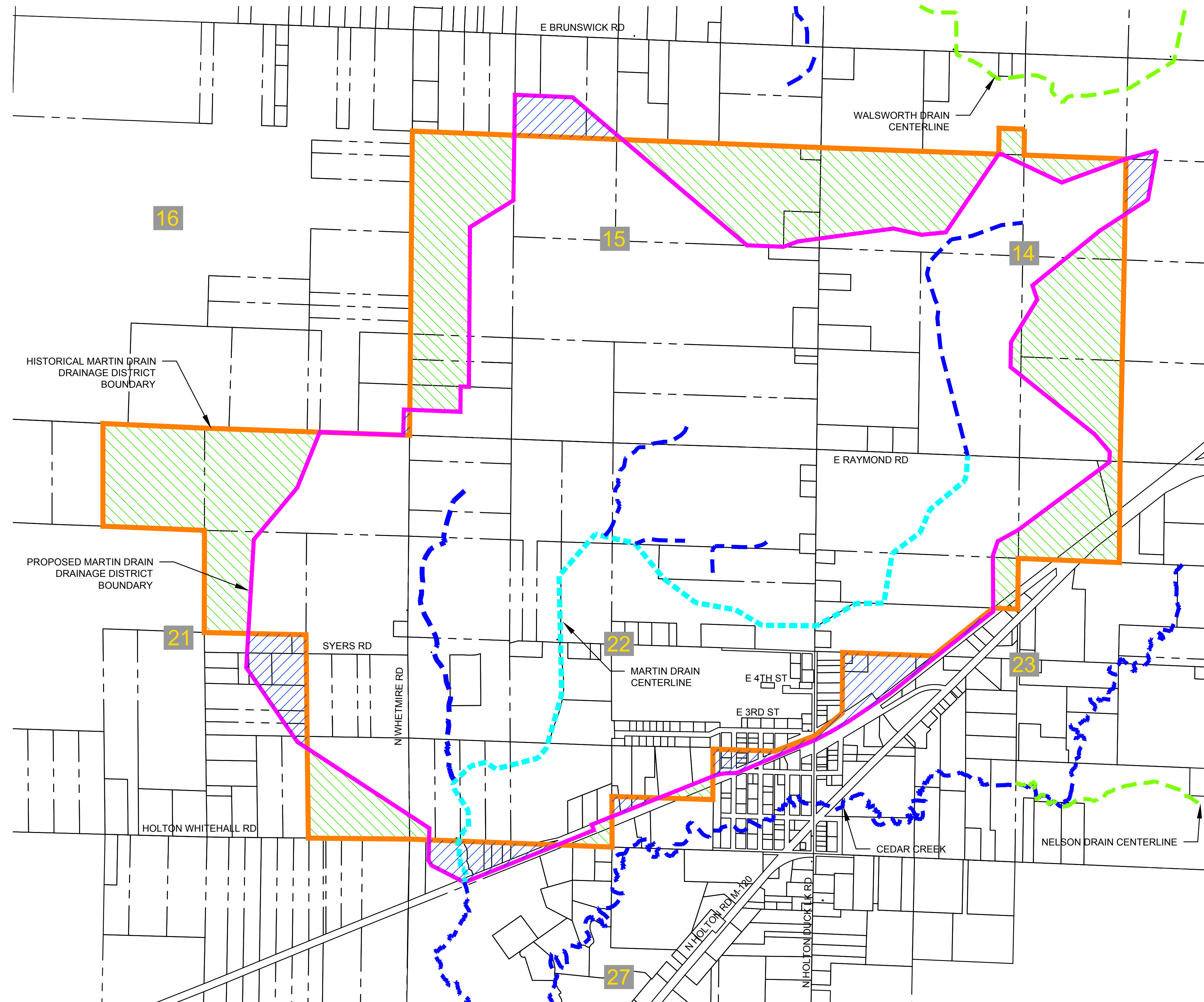
PART OF SECTIONS 14,15, 16, 21, 22, 23 & 27 OF HOLTON TWP, T12N, R15W,
 MUSKEGON COUNTY, MICHIGAN



LOCATION MAP
NO SCALE



NO.	REVISIONS	DATE	BY	DATE	BY	DATE	BY



SCALE: 1"=800'

LEGEND

- PROPOSED MARTIN DRAIN DRAINAGE DISTRICT BOUNDARY
- - - MARTIN DRAIN CENTERLINE
- - - OTHER COUNTY DRAINS
- - - OTHER WATERCOURSES
- - - PARCEL LINE
- 12 SECTION NUMBER
- SECTION CORNER
- HISTORICAL MARTIN DRAIN DRAINAGE DISTRICT BOUNDARY
- LANDS ADDED
- LANDS REMOVED

LANDS ADDED / REMOVED EXHIBIT

4063 Grand Oak Drive Suite A109
 Lansing, MI 48911
 517.887.1100
 16930 Robbins Road Suite 105
 Grand Haven, MI 49417
 616.743.7070
 engdot.com



BRENDA M. MOORE
MUSKEGON COUNTY DRAIN COMMISSIONER
STEPHANIE BARRETT, DEPUTY DRAIN COMMISSIONER
MARTIN DRAIN DRAINAGE DISTRICT
 PART OF SECTIONS 14,15, 16, 21, 22, 23 & 27 OF HOLTON TWP, T12N, R15W,
 MUSKEGON COUNTY, MICHIGAN

PROJECT NO.
18014

SHEET NO.
1 OF 1