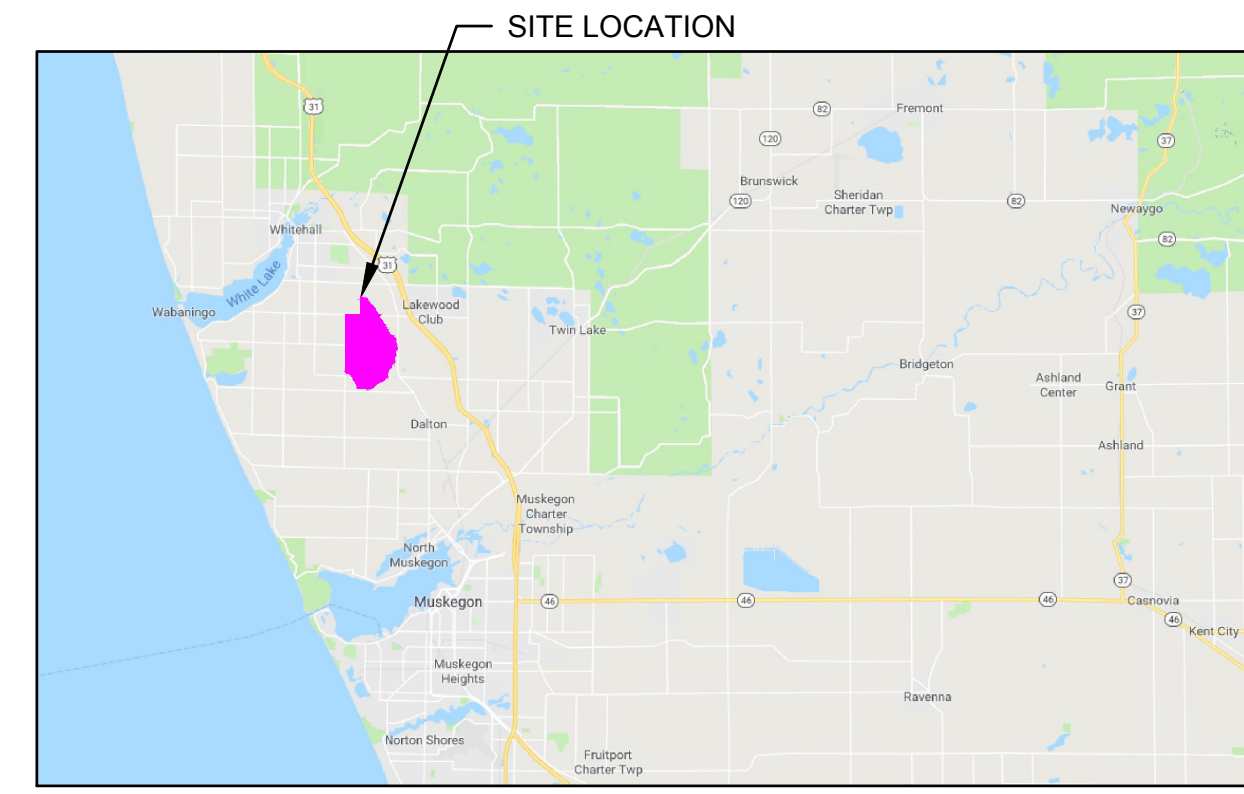
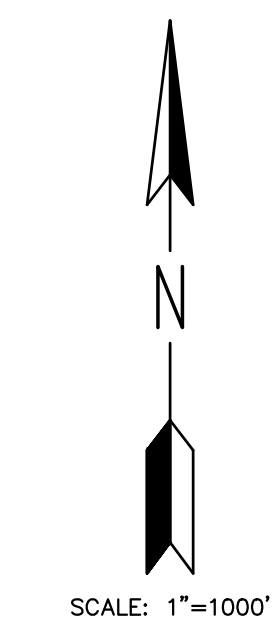
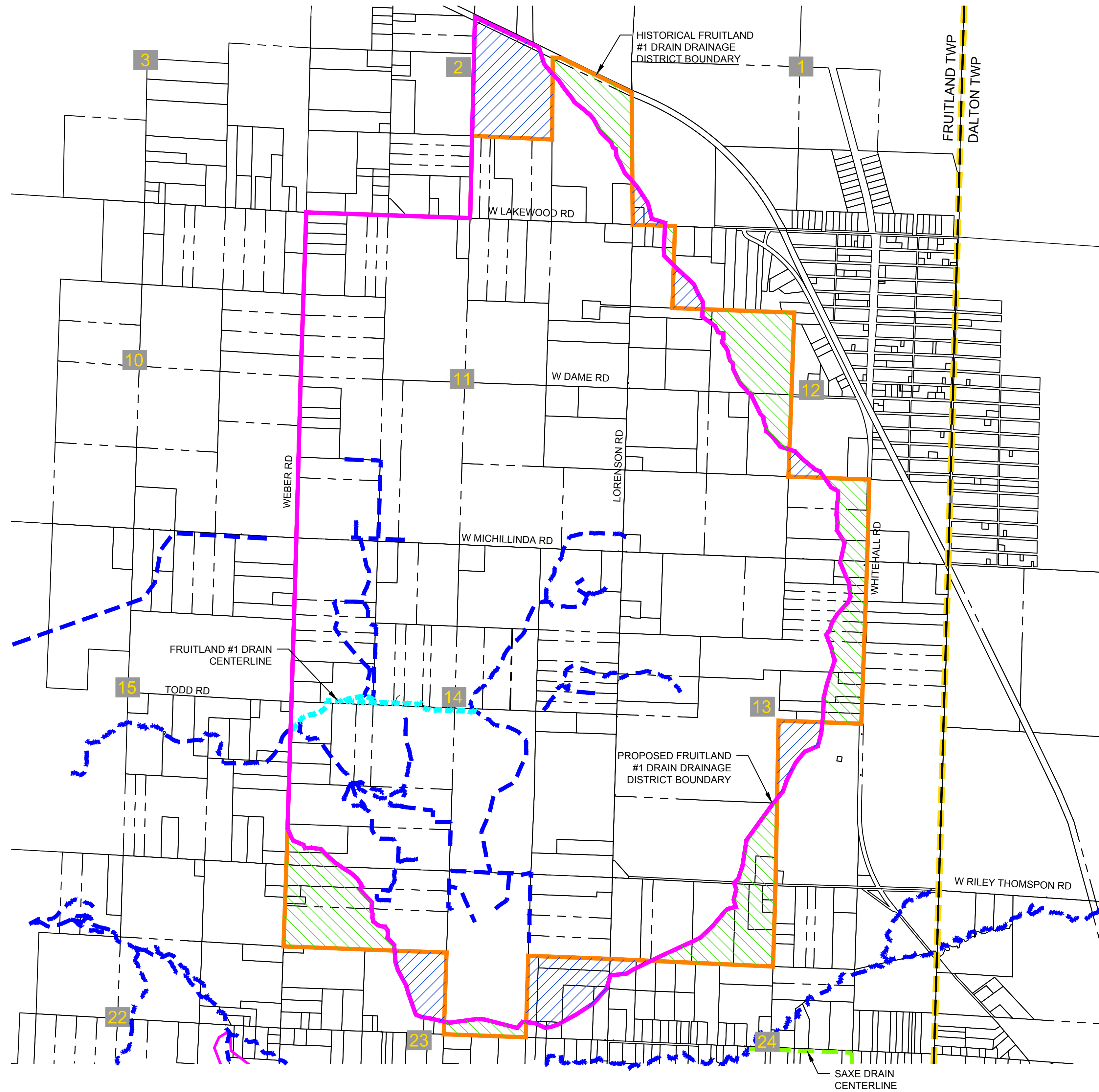




**BRENDA M. MOORE**  
**MUSKEGON COUNTY DRAIN COMMISSIONER**  
**STEPHANIE BARRETT, DEPUTY DRAIN COMMISSIONER**  
**FRUITLAND #1 DRAIN DRAINAGE DISTRICT**  
 PART OF SECTIONS 1, 2, 11, 12, 13, 14, 23 & 24 OF FRUITLAND TWP, T9N, R17W  
 MUSKEGON COUNTY, MICHIGAN



LOCATION MAP  
NO SCALE



**LEGEND**

- PROPOSED FRUITLAND #1 DRAIN DRAINAGE DISTRICT BOUNDARY
- - - - - FRUITLAND #1 DRAIN CENTERLINE
- - - - - OTHER COUNTY DRAINS
- - - - - OTHER WATERCOURSES
- - - - - MUNICIPAL BOUNDARIES
- - - - - PARCEL LINE
- 12 SECTION NUMBER
- + SECTION CORNER
- HISTORICAL FRUITLAND #1 DRAIN DRAINAGE DISTRICT BOUNDARY
- LANDS ADDED
- LANDS REMOVED

NO.	REVISIONS	DATE	BY	DATE	BY	DATE	BY

4083 Grand Oak Drive Suite A109  
Lansing, MI 48911  
517.887.1100

16830 Robbins Road Suite 105  
Grand Haven, MI 49417  
616.743.7070  
engdot.com



**BRENDA M. MOORE**  
**MUSKEGON COUNTY DRAIN COMMISSIONER**  
**STEPHANIE BARRETT, DEPUTY DRAIN COMMISSIONER**  
**FRUITLAND #1 DRAIN DRAINAGE DISTRICT**  
 PART OF SECTIONS 1, 2, 11, 12, 13, 14, 23 & 24 OF FRUITLAND TWP, T9N, R17W  
 MUSKEGON COUNTY, MICHIGAN

PROJECT NO.  
**18014**

SHEET NO.  
**1 OF 1**