

# Parent Drain Drainage District



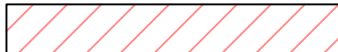




Sections 1, 2 & 12 T11N, R15W  
Cedar Creek Township,  
Muskegon County,  
Michigan

## Drain Information:

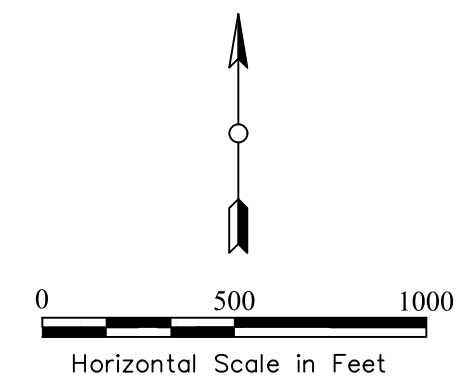
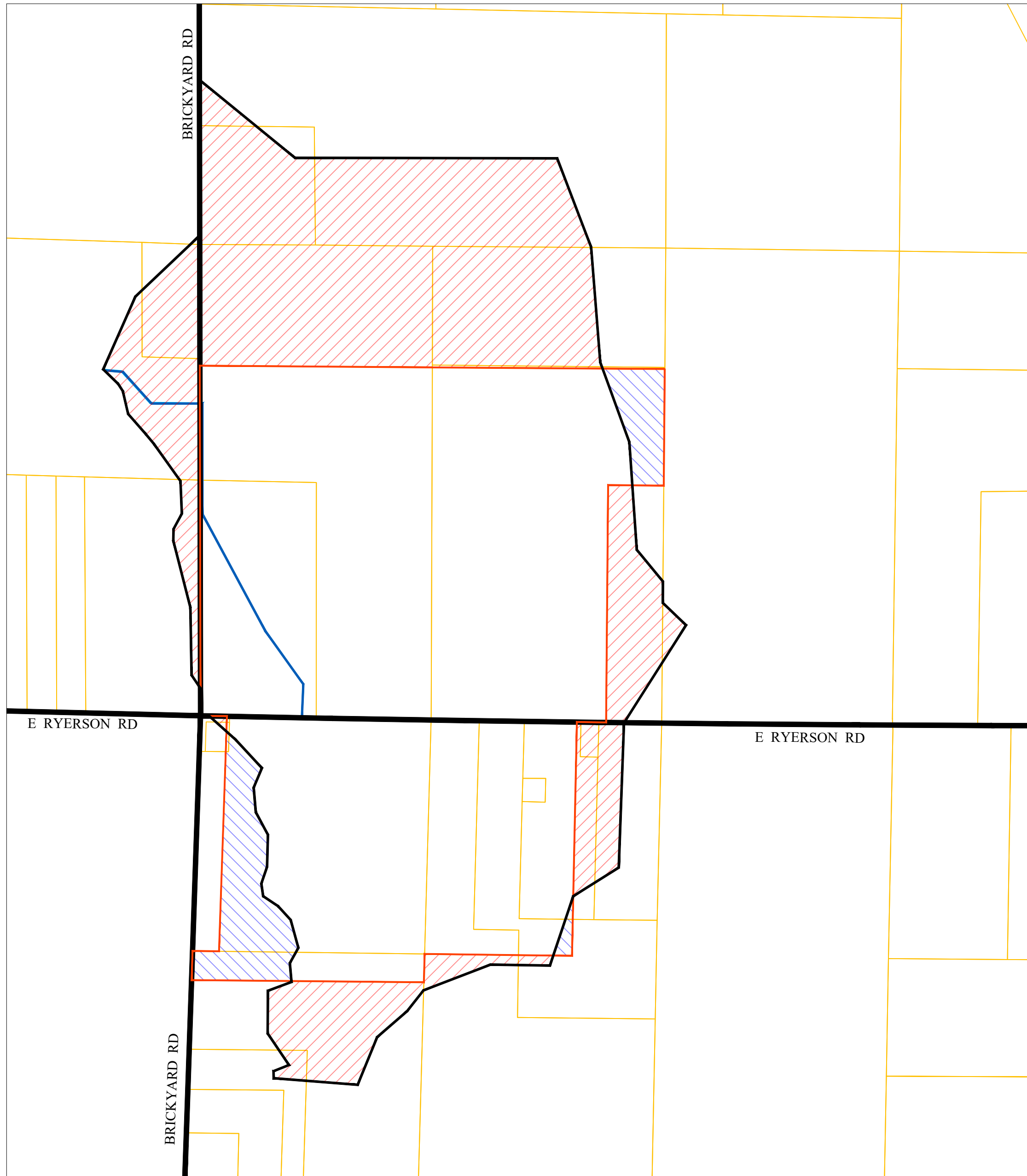
Historic District Acreage: 175.5 Acres  
Revised District Acreage: 260.7 Acres

Lands Added: 98.28 Acres  
Lands Removed: 13.11 Acres

## LEGEND

-  Historic Drainage District
-  Revised Drainage District
-  Lands Added
-  Lands Removed
-  Road Centerline
-  Parcel Line
-  Drain Alignment (per legal description)

NOTE: HANSEN DRAIN DRAINAGE DISTRICT IS AFFECTED BY NEW DELINEATION



REV.	DESCRIPTION	DATE

**PARENT DRAIN DRAINAGE DISTRICT**  
LANDS ADDED/REMOVED MAP  
**MUSKEGON COUNTY DRAIN COMMISSIONERS OFFICE**  
141 E. Apple Ave.  
Muskegon, MI 49442-3404  
Phone 231.724.6219

**SCHULTZ LAND & WATER CONSULTING INC.**  
4859 TOWNSEND CT.  
P.O. BOX 301  
MONTAGUE, MI 49437  
PHONE (231)893-7177  
SchultzLandWater.com  
DAVID.SCHULTZ@CHARTER.NET

DRAWN BY  
**ARL**  
JOB NO.  
**18021**

**SHEET  
1/1**